



aluminium **window.**

Luxury aluminium windows by Alunet Systems.



You asked, we listened. Making fabrication and installation easy!

Continually investing to add value to our customers whilst offering the best all-round performance aluminium products to the UK market, 23 Doors entire Aluna range provides premium security, luxurious durability, and robust functionality as standard.

Making it easy is a key attribute of the 23 product family, as is never standing still with regards product design and differentiating product features. Made from top quality aluminium, our 23 range is specifically designed and manufactured to create a finished product that not only looks good immediately after installation, but also continues to retain that luxurious finish and performance for years to come.

With 23 premium aluminium, you can fabricate and install an entire house project – it really is easy!

There are several reasons that 23 is fast becoming the go-to brand of choice in the UK for luxury aluminium, but here is an overview:

Everything we design and do has our customers at the heart, front, and centre.

Pas24 certified aluminium across all of our range.

Unrivalled strength and durability. the 23 range is strong, durable, lightweight and corrosion resistant to withstand any weather.

Excellent thermal efficiency.

Secure and highly attractive.

We have a vast UK stock holding of our standard colours.

Available in all RAL colours on request.

Super Slim Sash available.

Arguably the best all-round performance, including excellent security, durability and functionality. We can offer you the best aluminium products the market has to offer. Get in touch today to discover the vast opportunities our 23 family is opening up!



SLIM LUXURY ALUMINIUM CASEMENT WINDOWS

The 23 Window's super slim sash offers minimal sightlines for maximised views. Secure to PAS24:2024 certification, the 23 Window exceeds Part L compliance with a WER rating of A, and a new built requirement of 1.4 W/(m²k) as standard, with 1.2 W/(m²k) achievable with triple glazing.

The 23 Window is available with a 73mm outerframe as standard, which seamlessly couples with our 23 Bifold door system, and even shares some of the same components. This profile is perfect when using the window system as sidelights with openers to the bifold system. It can even be glazed from the inside and the outside for simple, pain-free installation.

Why choose Aluminium?

Aluminium is extremely durable and more hard-wearing than other materials on the market. You'll be able to enjoy 23 premium aluminium windows for decades to come due to their high resistance to the elements.

It is also an incredibly strong material, providing a high level of security and impact resistance.

Aluminium windows are among the best insulated on the market, thanks to advanced thermal break technology, which prevents cold transfer.

They require very little maintenance to ensure optimal performance and a fresh aesthetic.

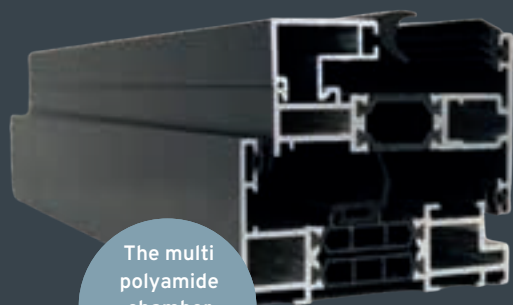


With its elegant, contemporary design, the 23 Window perfectly complements our other systems, bringing you a cohesive range of products. All configurations of the 23 Window system can be finished in several glazing options to create a style that suits any property.

- 28-44mm glazing options
- Heritage / flush & standard window options
- 1.4 U-value as standard, 1.2 U-value with triple glazing
- Energy rating A (WER)
- Side hung / top hung / fixed light options available
- NEW 73mm aluminium profile option perfectly complements the ALUNA Bifold system



Slim sash for
minimal
sightlines



The multi
polyamide
chamber
enhances
U values



10
YEAR
GUARANTEE

PAS24
COMPLIANT



1.4
U-Value
/ WER A

ENERGY
RATED
A



ENERGY
RATED
A

HARDWARE

MILA HANDLES

The Mila handle is available in 5 suited finishes, including **Polished Gold**, **Polished Chrome**, **Smooth Satin Chrome**, **White**, **Black**.

Manufactured to be ease of operation in mind, the modern design features an ergonomic lever contoured to the shape of your hand, and a tear drop button that offers comfort during use. Complete with a **high-security locking system**, the handles are extremely reliable having been tested up to **50,000 cycles**. Additionally, the handles come with **10-year guarantee**, for extra peace of mind.

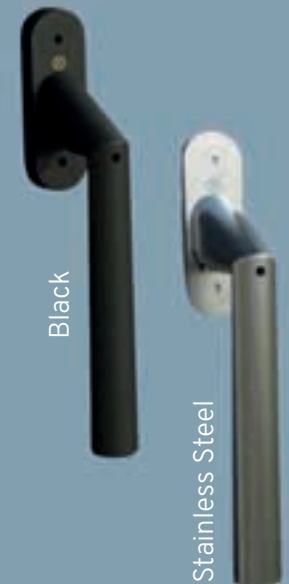


COASTAL STAINLESS STEEL RANGE

The high-quality window handles from Coastal offer a sleek, contemporary look with no compromise on security.

The **super slim design** flawlessly complements the aluminium windows, while the **lockable system** ideal for those safety-conscious homeowners.

The handles are manufactured from solid **316 Marine Grade Stainless Steel**, which is also available in PVD Satin Black Finish.





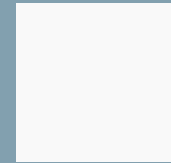
10
YEAR
GUARANTEE

PAS24
COMPLIANT

Colours

Our windows are available in three standard colours, plus two dual colour options.

For projects requiring bespoke coloured doors, any RAL colour can be available upon request.



White
RAL9016



Anthracite
Grey RAL7016



Black
RAL9005



Grey Out/
White In



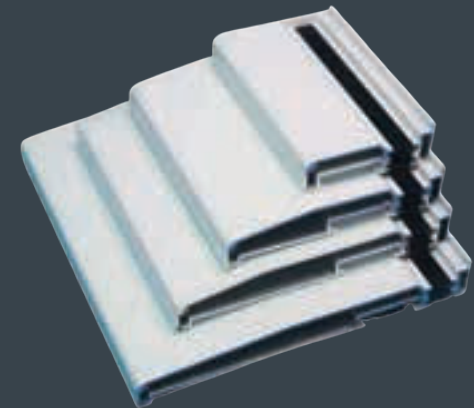
Black Out/
White In



Bespoke RAL
colour

Universal Aluminium Cills

Our range of universal **aluminium cills** are compatible with most other door and window systems, including our ACW81 window system. They effectively direct water away from brickwork while providing an additional design element to the aesthetics of the window.



Our aluminium cill is more robust than PVC alternatives and comes complete with plastic push-in colour-matched end caps in our standard stock colours, for a secure and sleek finish.

Cill sizes are **90mm, 150mm, 190mm and 230mm.**

Available in Black, White, Anthracite Grey, and dual colours of White / Anthracite Grey and Black / White, our cills can also be powder coated in any RAL colour.

Thermal Efficiency

The ACW81 system exceeds Part L compliance with a WER rating of A, and new built requirement of 1.4 W/(m²k) as standard. 1.2 W/(m²k) is achievable with triple glazing.

Weather Resistance

Excellent weather sealing is achieved using specially designed **perimeter seals**, Weather tightness tested to British standards.

Low Maintenance

Our low maintenance aluminium windows are strong, durable and highly **corrosion resistant**. Unlike timber, they don't need painting or staining to keep them **weatherproof**, and they won't rust or corrode. They will also never rot, peel or flake.

Maximum Vision

The ACW81 Window is designed to collaborate with all our aluminium products. The super slim sash is a great option to complement the slim **profile** of our modern bifold and patio doors to make the most of your stunning views.





Luxury Aluminium By



