



whole house.

Luxury aluminium doors, windows, lanterns and rooflights
by Alunet Systems.





Versatile and luxurious aluminium systems with stunning frames and incredible sightlines.

The beautifully sculptured ALUNA products are distinctive in their design using the highest quality materials and expert manufacturing.

Bringing ultra-modern designs and technically advanced systems to the world of doors and windows, using aluminium to provide the best solutions in every home.

ALUNA is a luxury collection of products brought to you by Alunet Systems, incorporating their expertise and knowledge into a range of products unbeaten on quality.

- 23 Bifold
- 23 French Door
- 23 Sliding Door
- 23 Aluna⁺ Entrance Door
- 23 Aluna⁺ Window
- 23 Aluna⁺ Rooflight
- 23 Aluna⁺ Lantern



Sleek

Strong

Secure

Premium aluminium systems designed to a high specification; thermally efficient, durable, safe and secure, all without compromising style.



WHY CHOOSE ALUMINIUM?

Aluminium is known as the highest-quality material on the market, renowned for its durability and hard-wearing materials. Aluminium doors and windows can be maintained for decades, due to their high resistance to the elements. It is also extremely strong, providing a high level of security in every home.





aluminium bifold door.

One system that does it all

The slim profile sections of the 23 Bifold door minimise the visible framework and maximise the glass area, with super-slim sightlines from just 107mm. Offering one of the largest sash sizes available, 23 offers customers dimensions of up to 1200mm wide and 3000mm high per pane.

Enjoy silky smooth opening and closing operation due to engineering-grade hardware. Ideal to open up your space to the outdoors and create a visually stunning addition to your property. The doors also offer excellent thermal performance with U-values as low as 1.1 U/m²K with triple glazing, and 1.4 U/m²K with double glazing, plus high security to PAS24:2022 standards.

The 23 Bifold system is endlessly versatile, suitable for projects requiring bifolding doors and windows, single doors and French doors.

- A slimline system used for single doors, French doors and bifolding doors and windows
- Engineering-grade hardware for silky smooth operation
- Market-leading maximum sash sizes and minimal sightlines
- Thermally broken system for maximum thermal efficiency
- Manufactured with up to 7 leaves each way (14 in total)
- Fitter-friendly & quick installation
- Clip-in bead option available

All sashes with the bifolding system are available in 2 profile designs: square and textured square*. Choose square for a classic look or textured square for a more contemporary alternative.

The ALUNA bifold system has been designed with ease of installation in mind. The system offers an optional adjustable jamb feature for maximum adjustability of +/- 4mm either side during installation, and is easily adjustable with an allen key.

New to the bifold system is our 90 degree door restrictor, preventing the door from opening more than 90 degrees. Easy to install, the arm can also be easily detached for full opening of the door.

*Textured square only available in 7016 anthracite grey

Whether it's a single door, French door, bifolding door or window, they can all be fabricated from the same 23 Bifold system. It's so versatile that it can cater to projects that require shaped frames, fixed frames, sidelights, astragal bars, blinds in glass, and can even be used as an entrance door with optional panel inserts.

All 23 Bifold products can be finished in several glazing options to create a style to suit any property including:

- **Double & triple glazing**
- **Integral blinds**
- **Heritage look astragal bars & transoms**
- **Solid panel inserts**



**ULTRA
SLIM**
SIGHTLINES

PAS24
COMPLIANT

10
YEAR
GUARANTEE

1.1
U-VALUE
TRIPLE GLAZED

Heritage Look Luxury

The 23 premium range of aluminium, is constantly evolving and being enhanced. This continual improvement ethos perfectly encapsulates our drive, mission and service proposition as a team to be the most in-demand and luxury aluminium brand of choice across the UK.

Add a modern and contemporary feel to your doors and windows with our sleek heritage look style. Available as true divide or as slimline astragal bars offering further choice and flexibility to design and fabricate to suit your customers exact requirements.

Imagine the combination of this sleek, strong and modern steel-look, coupled with our PAS24 accredited lever lever lock system, enabling the ultimate symmetrical, premium finish to your fabricated and installed doors.

The features, benefits and design options are simply stacking up in favour of 23, it's the reason why so many fabricating partners are choosing this range to help them grow their businesses successfully and sustainably.



Redefining
Luxury
Aluminium!



**ULTRA
SLIM**
SIGHTLINES

PAS24
COMPLIANT

10
YEAR
GUARANTEE

1.1
U-VALUE
TRIPLE GLAZED





Modern simplicity with traditional elegance

Aluminium French doors are an excellent access solution for areas where there is limited space, while accommodating modern glazing. Ideal for when access is required from multiple points of a property, these doors serve as great entry points at the rear of a house.

Benefitting from the sleek design of the 23 Bifold system, these doors can be customised with a large variety of hardware and colour options to find the perfect style for any home. Add astragal bars or fixed transoms to achieve the popular heritage look or choose blinds in glass for added privacy in the home.

The 23 French range remains a popular choice for many homeowners due to its ease of installation and smooth opening and closing operation. The perfect & simple solution for entranceways that increases natural light in the home and offer a sleek, contemporary aesthetic.

- Designed for both internal and external access
- Manufactured using the ALUNA bifold system
- Wide variety of hardware & colour options to suit any style
- Elegant opening and closing operation
- PAS24:2024 certified

Lever Lever Locks

Why not add an additional touch of luxury with our PAS24 accredited lever lever lock system, enabling the ultimate symmetrical and premium finish to your fabricated and installed doors!

This ultimate sleek and secure locking option can be installed within our super slim sash creating an aesthetically pleasing finish to the door design. Gone are the lever and opposing slave door handle and in their place is a uniform mirrored aesthetic with dual handles. No additional profiles or gaskets are required to upgrade to lever lever.

We have adopted our already well received universal keep to have a shootbolt locking function added, all in one lock & keep. Aesthetically more pleasing and with the slimmest sightline on the market for French door options, speed and ease of fabrication and a competitive price position, lever lever truly is a luxury addition to the Aluna family and one that will undoubtedly accelerate your own installer demand.



Leveraging Luxury for Long Lasting Locked in sales!



Innovating Luxury Aluminium!

ULTRA
SLIM
SIGHTLINES

PAS24
COMPLIANT

10
YEAR
GUARANTEE

1.1
U-VALUE
TRIPLE GLAZED



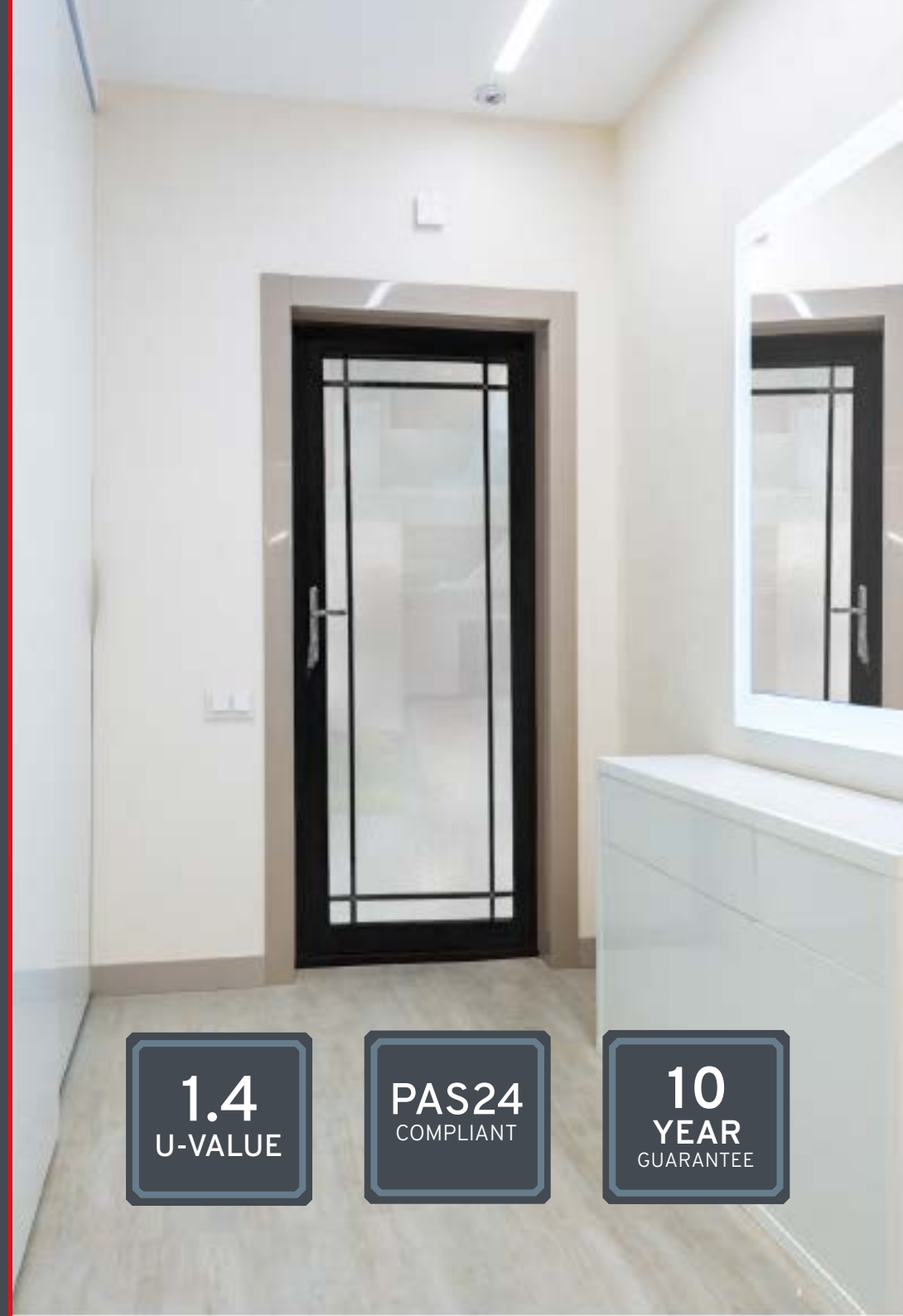
Bringing light to smaller spaces

The ALUNA glazed door is the perfect solution for smaller spaces that lack natural light. In spaces with little room for patio or bifolding solutions, the single door floods a room with natural light, creating a bright and airy living space, thanks to its large glazed panel.

Choose fully glazed to let in the light or the satin glass for more privacy. Aluminium panels are also available for entrance door applications.

Designed using the versatile ALUNA bifold system, the single door benefits from simple operation. With multiple glazing options and colour choices available, a perfect match can be made to your home with the ALUNA glazed door.

- Designed for both internal and external access
- Wide variety of hardware & colour options to suit any style
- PAS24:2024 certified



1.4
U-VALUE

PAS24
COMPLIANT

10
YEAR
GUARANTEE

ALULOCK

LOCK, KEEP AND HANDLE

The ultimate security kit for 23 Bifolds, French doors and single doors.

ALULOCK security kit combines a euro cylinder as standard, with the option to upgrade to the Ultion 3-star barrel, with the Brisant Sweet Handle and an exclusively designed Duplex Double-Hook Lock, providing a solid 6-point locking system for additional security.

THE SWEET HANDLES

Safe, Stylish & Durable

The Ultion Sweet Handles are a popular upgrade due to their impressive durability as part of the ultimate security kit. These stunning handles are highly secure, and can stop gripping tools designed to snap off handles during break ins.

Carrying multiple coatings of brass and nickel to ensure robust performance, with a 10-year anti-corrosion guarantee for peace of mind.



Available in a range of colours including: black, white, grey, chrome, stainless steel, gold and rose gold.

STAINLESS STEEL HANDLE

316 Marine Grade Stainless Steel

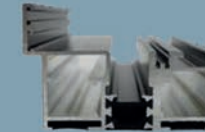
The stainless steel handle upgrade has been designed by experts for enhanced performance and durability creating one of the highest quality door handles on the market.



The suited handle is made from 316 marine grade stainless steel, compared to the industry-standard of 304, giving it long-term resistance to corrosion.

Thresholds

The 23 Bifold, French Door & Single Door can all be designed with the following threshold options:



Standard threshold

A 55mm threshold that acts as a full weather break.



Low threshold

A 20mm threshold for a seamless look.



Low threshold with rebate

A 20mm rebate attached to a low threshold.



Low threshold with ramps

Ideal for homes that need additional accessibility.



Integrated cill

Provides full weather rating and maximises the overall sash height.

Universal aluminium cills

Compatible with most systems, directing water way from brickwork (available as 90mm, 150mm, 190mm & 230mm).





aluminium sliding door.

Perfect soft closing technology with uninterrupted views

Aluminium sliding doors create a visually stunning addition to your home and can add huge value to the property.

The 23 Slider system is an ultra-modern, super-slim sliding patio door solution with double and triple track options with the choice of inline slider or lift & slide.

Engineering-grade hardware allows for silky smooth operation, with the use of narrow profiles. Designed with bottom rails of 42mm and 34mm wide, the system enables vast unobstructed stunning views.

A wide variety of configurations are achievable, including a fixed sash and up to 4 panes, as either inline sliding or lift and slide doors.

What's more, all our doors are rigorously tested to European safety standards and powder coated to Qualcoat's specifications, for complete peace of mind.

- Market-leading sash sizes of up to 2.5m x 2.7m per sash
- Minimal, super-slim sightlines of just 25mm or 50mm
- Double and triple track options available
- Inline slider as standard with the option of lift and slide
- Wide variety of configurations achievable
- Maximum weatherproofing and security
- PAS24:2024 compliant

23 Sliders perfectly frame and enhance an outdoor view while creating a light and bright indoor space in your home. The design transforms entire walls into expanses of secure glass, providing the increased freedom of accessibility while creating a seamless connection between the interior and the outdoors.

The system is designed for large opening sizes, with market-leading sash sizes achievable of up to 2.5m x 2.7m per pane. Paired with a super-slim interlock of just 25mm or 50mm gives maximum vision and uninterrupted views.

There is a perfect solution for every project with the 23 Sliding door system. Choose from a wide variety of configurations, depending on the number of panes required, and which panes are sliding or fixed.

The sliding doors also offer excellent thermal performance - with U-values as low as 1.4 U/m²K; effective noise reduction; and high security to PAS24:2024 standards.

The system has been designed to accommodate double and triple glazed units and blinds in glass. Innovative engineering allows for vast expanses of glass to create an impressive visual impact.

23's market-leading 25mm and 50mm super-slim, one piece interlocks are easy to fabricate with no need for end caps. Made of robust aluminium, the interlocks can be used with the inline slider, no matter the size of the door.

Special features of the 23 Sliding door:

- Trickle vents can be added
- Multi-locking mechanism
- Stainless steel lamina on rail profiles for smooth sliding
- Plastic rail cover (PVC) for thermal insulation and water protection
- Rubber tubular gaskets (EPDM) providing an absolute seal
- Two levels of channelling water for improved drainage

1.4
U-VALUE

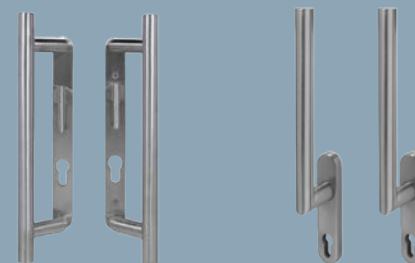
**SUPER
SLIM**
SIGHTLINES

PAS24
COMPLIANT

10
YEAR
GUARANTEE

Hardware

The super-slim 23 Slider comes with a range of sleek, complementary hardware available in a variety of colours.



Combined with a high-security multipoint locking system, the slider is equipped to keep properties safe and secure.

Universal Aluminium Cills

The 23 Slider is also available with a range of universal aluminium cills that direct water away from the brickwork while also offering an additional design element to the door's aesthetics.

Our aluminium cills are more robust than uPVC and come in sizes of 90mm, 150mm, 190mm & 230mm.

Available in our stock colours for a sleek finish, with the option of powder coating in any RAL colour for the ultimate match.



aluna⁺ entrance door.

Premium doors with endless customisation options

23 Aluna⁺ entrance doors boast a multitude of functional and aesthetic benefits that make it a stand-out choice for the modern home.

The Aluna⁺ entrance doors are comprised of the DESIGN, XGLASS, SLAT, and CLASSIC ranges, and are available in a wide range of styles and configurations, with endless customisation options.

Flush, simple and elegant, the combination of the aluminium profile and foam insulation provides the ideal solution for maximising the security and thermal efficiency for the home.

Benefitting from high security multi-point hook locks and reinforced roller hinges, the Aluna⁺ entrance door offers a wealth of security features that make it one of the market leaders for performance.

- Endless customisation options to choose from
- Designed to maximise security and thermal efficiency
- Premium quality entrance doors manufactured with top-quality materials
- Choice of four door range styles: DESIGN, XGLASS, SLAT, and CLASSIC
- Made-to-measure to suit exact size and style specifications
- Featuring high-quality thermal foam insulation, the doors boast outstanding U-values as low as 0.68 W/m²K





The 23 Aluna⁺ Design line of entrance doors uniquely characterises a home's exterior and interior, reflecting its distinctive individuality.

The Aluna⁺ Design collection offers the opportunity to infuse homes with an original, contemporary, and distinctive style.

An impeccable blend of elegance, style, security, and longevity.





A luxury combination of aluminum and glass. A technologically advanced solution with an incredible aesthetic appearance.

The fusion of a glossy glass surface with aluminum lends a distinctive character to this exquisite 23 Aluna⁺ XGlass door.

The aluminium part can be made in any RAL colour. The glass is available in black.



Entrance doors with decorative slats bring a modern yet sophisticated touch to any space.

Designed for contemporary interiors and exteriors, these 23 Aluna⁺ Slat luxury doors offer a perfect balance between innovation and timeless elegance.

Precision craftsmanship, high-quality materials, and advanced finishing techniques ensure long-lasting durability, functionality, and style.

With their clean lines and architectural appeal, Aluna⁺ doors seamlessly complement the latest design trends, making them an ideal choice for modern homes and commercial spaces.





classic.

Blending tradition, sophistication, and comfort, this unique 23 Aluna+ Classic collection seamlessly integrates classic aesthetics with modern innovations, resulting in doors with unparalleled character.

Drawing inspiration from the grandeur of the Victorian era and the charm of countryside living, these Aluna+ Classic models feature refined, traditional forms that harmonise beautifully with both classic and contemporary interiors.

Aluna+ Classic is the perfect choice for those who seek enduring style - one that transcends trends and remains effortlessly elegant for years to come.



Taking The Fabrication of Luxury Aluminium to New Heights!

23 Aluna⁺ is leading the way and setting new heights within the aluminium fenestration industry, our brand new game changing innovative system is making waves across the UK already, just weeks after its initial launch.

Our fabricator focused product development and relentless pursuit of continual improvement has inspired the first steps in our enhanced development journey that is ambitious, exciting and totally game changing for fenestration.

With slim sightlines as standard, available in casement, flush, and tilt turn, this completely new 75mm window system will prove to be the EASIEST, QUICKEST, most FABRICATOR FRIENDLY window on the market!

Fabricators will love the fact that the Aluna⁺ performance beats legislation, as low as 0.9 W/m²K with triple glazing, and is delivered using standard 1.2 double glazed units.

We believe Aluna⁺ is luxury, value driven and full of opportunity for fabricators to make profit, in designing the system to have less collective parts we are making it far more cost efficient in labour time, stock holding and manufacturing.

With a unique patent pending universal sash/transom profile the Aluna⁺ window system puts the fabricator 1st from the outset. Designed cleverly to reduce the need for excessive stock holding, Aluna⁺ harnesses simplicity in its design, helping release cash at source for the fabricator, cash that can be used to help grow their business in partnership with the wider Aluna family.

Out the box Building Regulations compliant, Aluna⁺ boasts no foam, no fuss thermal efficiency with performance being managed using engineered polyamide thermal breaks.

Aluna⁺ adds more than simple thermal performance, the real game changer for fabricators is that the entire system is designed with over 30% less parts. This is a massive “+” for the system versus others, a reduced stockholding for fabricators means they can maximise their manufacturing space and ensure they sweat their efficiencies whilst reducing cash tied up in stock holdings.

Modular cills and ancillaries are another core feature of the product suite enhancing thermals further and providing yet more reductions in required stock.

Still not content, Aluna⁺ delivers further value by adding up all of these features and providing a reduction in fabrication waste - more than 5% saving!

Hardware

The 23 Aluna⁺ window comes with two styles of handles to choose from, combining high security with luxurious style.



The Mila handle is available in gold, chrome, satin, white & black.



Casement, Flush or Tilt & Turn



75mm window system



Easiest, quickest & most fabricator friendly window on the market!



PAS24:2024 compliant



Designed to complement other Aluna products



0.9
U-VALUE

PAS24
COMPLIANT

10
YEAR
GUARANTEE



Effortless Elegance, Above & Beyond!

Our 23 Aluna+ Rooflight is the ultimate flat roof glazing solution for contemporary living. Combining minimalist design with maximum performance, it's a clean, modern, and highly efficient way to transform residential interiors.

The premium rooflight is designed with the fabricator and installer in mind, offering precision engineering, future-proof energy efficiency, and exceptional ease of installation, all with the unrivalled service and support you'd expect from the 23 team.



- + Fully thermally broken aluminium frame dramatically reduces heat transfer
- + U-values; 1.3 W/m K double-glazed, 0.92 W/m K triple-glazed
- + Fast, efficient installation
- + Self-cleaning, high-performance safety glass - less maintenance
- + Slimline, low-profile aesthetics - uninterrupted views of the sky
- + Noise reducing
- + Partially bonded top caps and concealed internal fixings
- + Integral drainage system
- + Internal security fixings - secured from the inside for added security
- + Bespoke sizing, made to measure up to a maximum glazing area of 2.5m
- + Available in standard Matt Black, Anthracite Grey or White
- + Any RAL colour on request
- + Glass tint choices - available in neutral or blue tinted glass
- + Future Homes Ready - ensuring longevity and compliance beyond 2025
- + Optional ceramic border - enhances visual finish





The Icon of Roof Lantern Innovation!

Our 23 Aluna+ Lantern is designed to Make It Easy for fabricators and installers, while delivering next-level architectural elegance.

Whether it's a contemporary home or a premium extension, the Aluna+ Lantern delivers style, simplicity, and standout performance.



Key features and benefits:

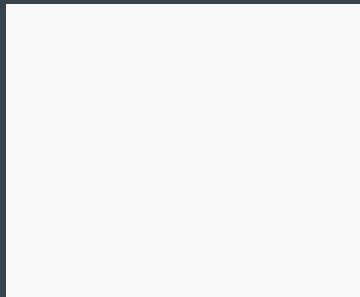
- + Fastest installation time in the market
- + Innovative Q-lok system
- + The most thermally efficient lantern on the market
- + Ultra-slim sightlines - more glass, more light, more wow
- + Thermally broken GRP ring beam the strongest on the market
- + The largest lantern on the market - high strength - weight ratio
- + Secure & future-proof - internal glazing clips & anti-tamper screws
- + Tailored to fit and made to order
- + Square & rectangular options up to 4m x 8m
- + 10-year guarantee - and built to last
- + Colour freedom - standard Black, Grey, White or any RAL shade
- + Integrated LED lighting
- + Self-cleaning glass, clear, neutral, laminated & blue tinted options





Colours

The standard colours in stock are Grey 7016 (Matte), Black (Matte), White 9016 (Gloss), Grey 7016 (Matte) on White 9016 (Gloss) and Black 9005 (Matte) on White 9016 (Gloss).



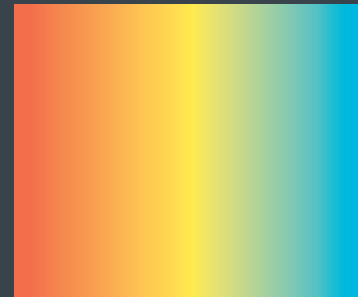
White
RAL9016



Anthracite Grey
RAL7016



Black
RAL9005



Bespoke RAL
Colour



Grey Out/
White In



Black Out/
White In

All of our products are available in these colours as standard,
and bespoke RAL colours upon request.

Please note that Aluna flat rooflight is only available in Black (Matte) and Grey 7016 (Matte).

